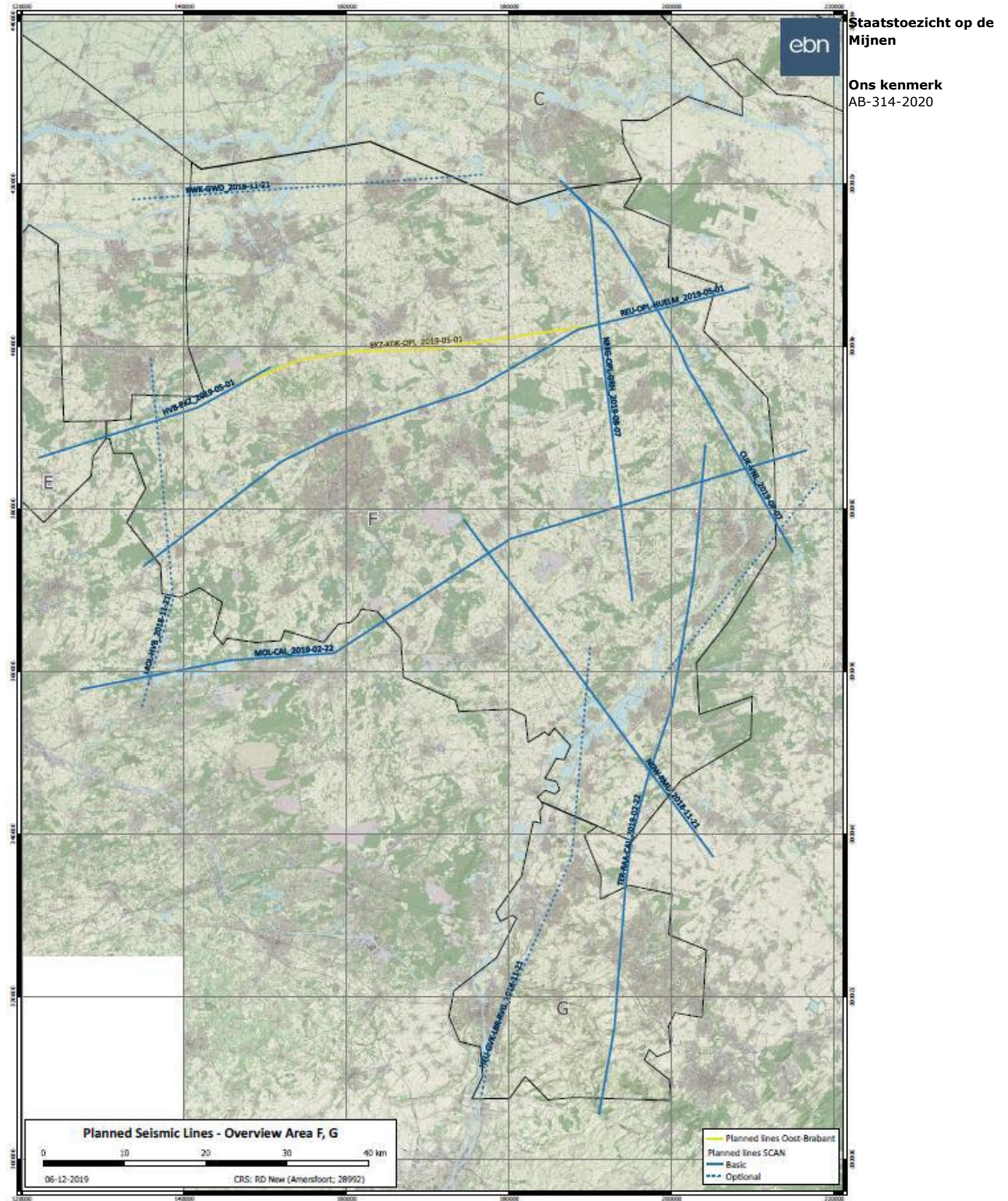
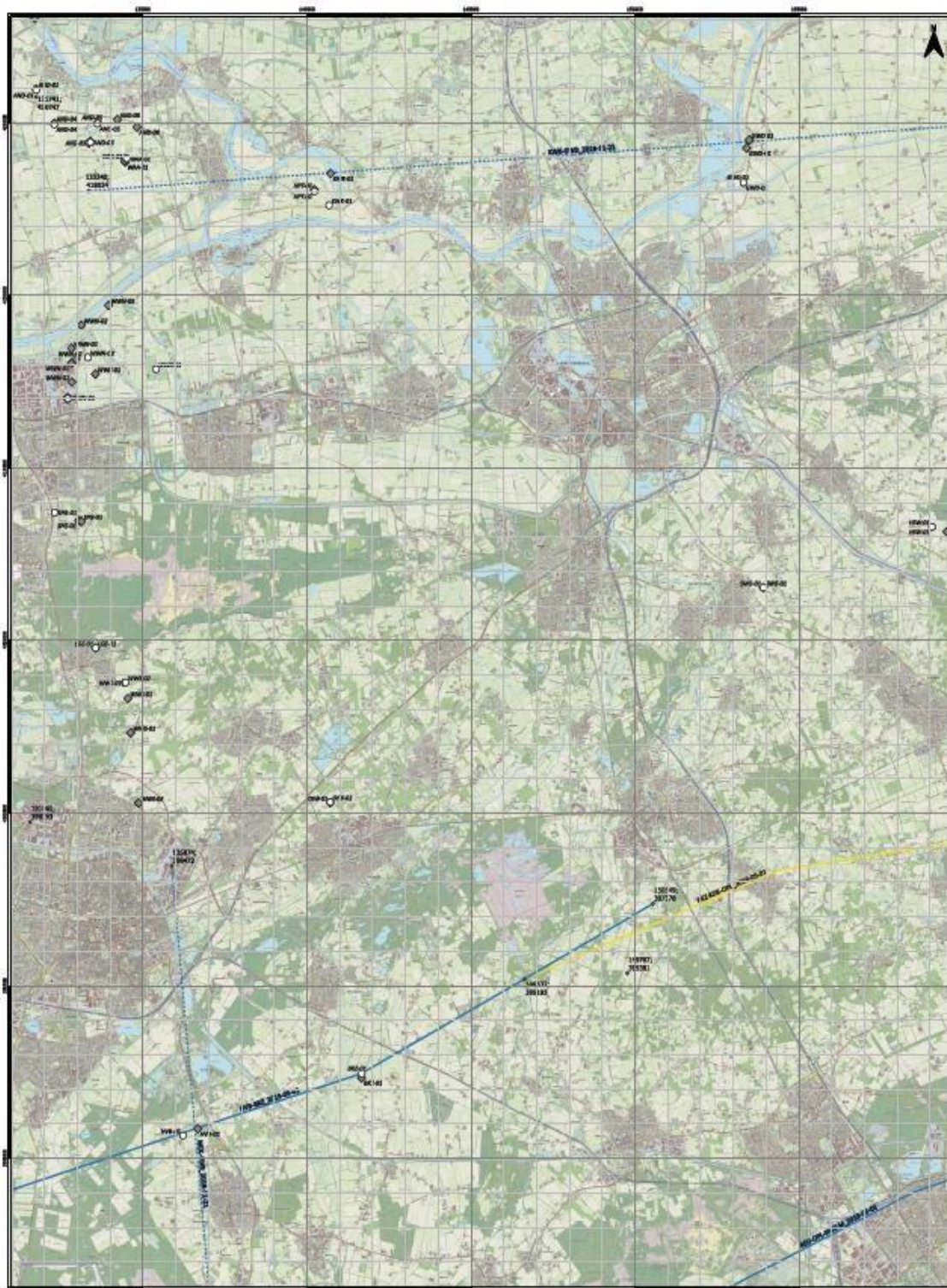


Bijlage 2: Topografische kaarten







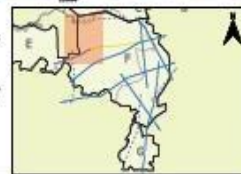
06-12-2019

**Planned Seismic Lines Area F, G  
Part 1 of 9 - 1:50.000**

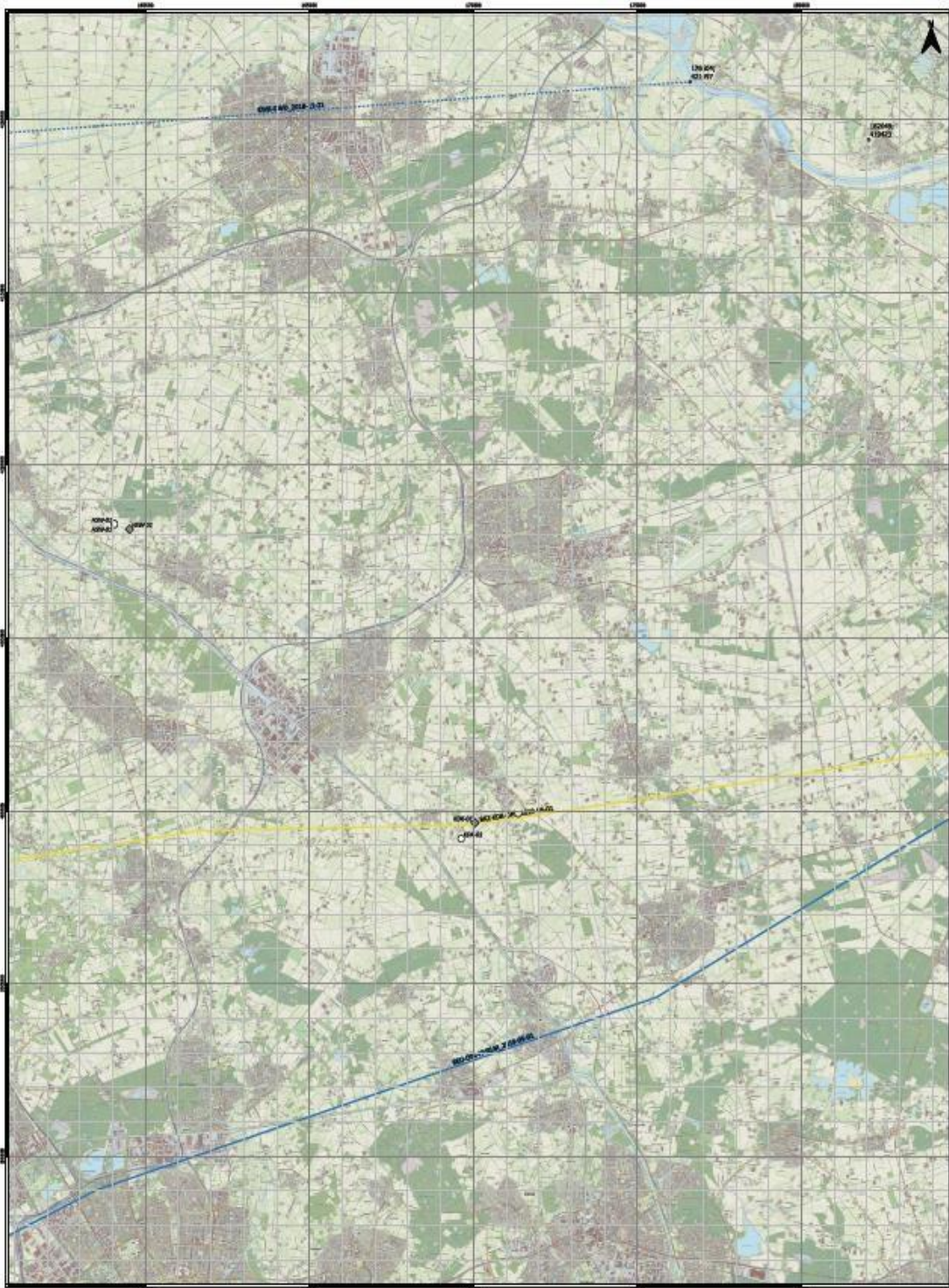


CRS: RD New (Amersfoort; 28992)

- Prognose
- Planned lines Oct-2020
- Planned lines SCAN
- Seis
- Optional
- Grid point coordinates (GCI)
- Well - 0m
- ◇ Well - TD







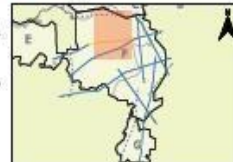
06-12-2019

**Planned Seismic Lines Area F, G**  
Part 2 of 9 - 1:50,000

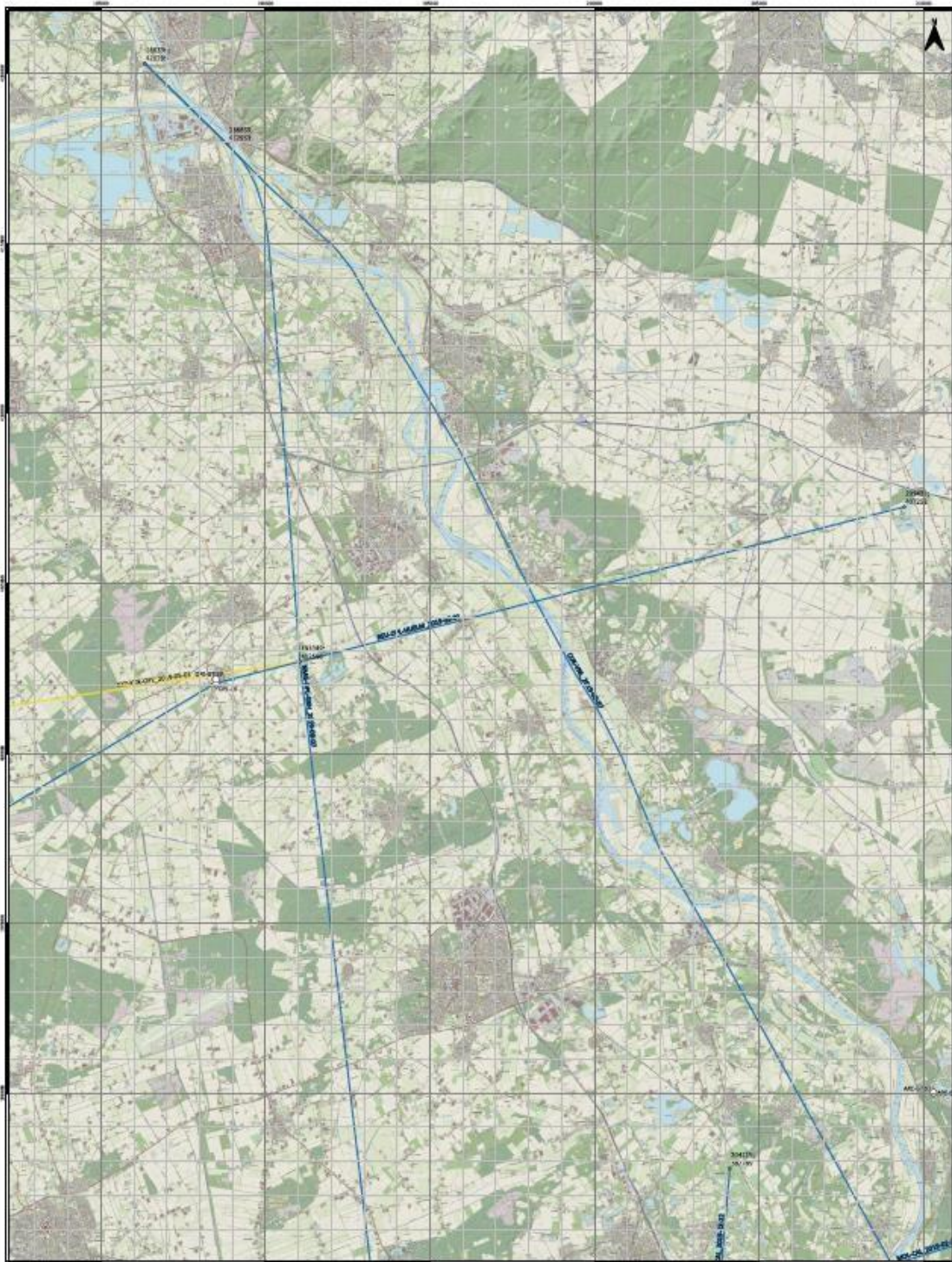


CRS: RD New (Amersfoort: 28962)

- Provinces
- Planned lines Coob-Brabant
- Planned lines SCAN
- Sels
- Optional
- End point coordinates (DPI)
- Well - Om
- Well - TD







06-12-2019

Planned Seismic Lines Area F, G  
Part 3 of 9 - 1:50.000

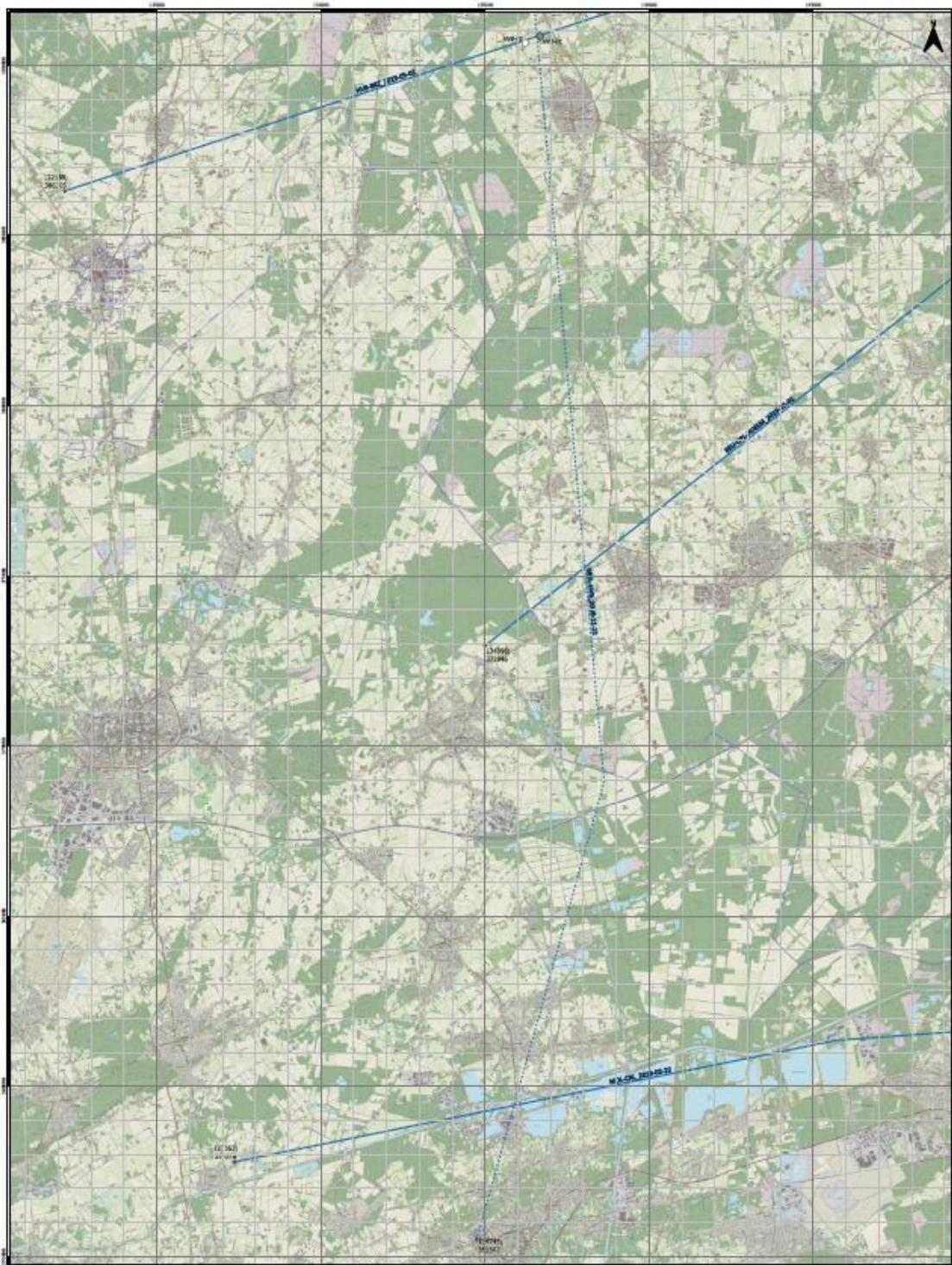


CBS: RD New (Amersfoort; 28992)

- Provinces
- Planned lines Clost-Grabant
- Planned lines SCAM
- Basis
- - - Optional
- End point coordinates (X,Y)
- Well - GM
- ◆ Well - TD







06-12-2019

Planned Seismic Lines Area F, G  
Part 4 of 9 - 1:50,000

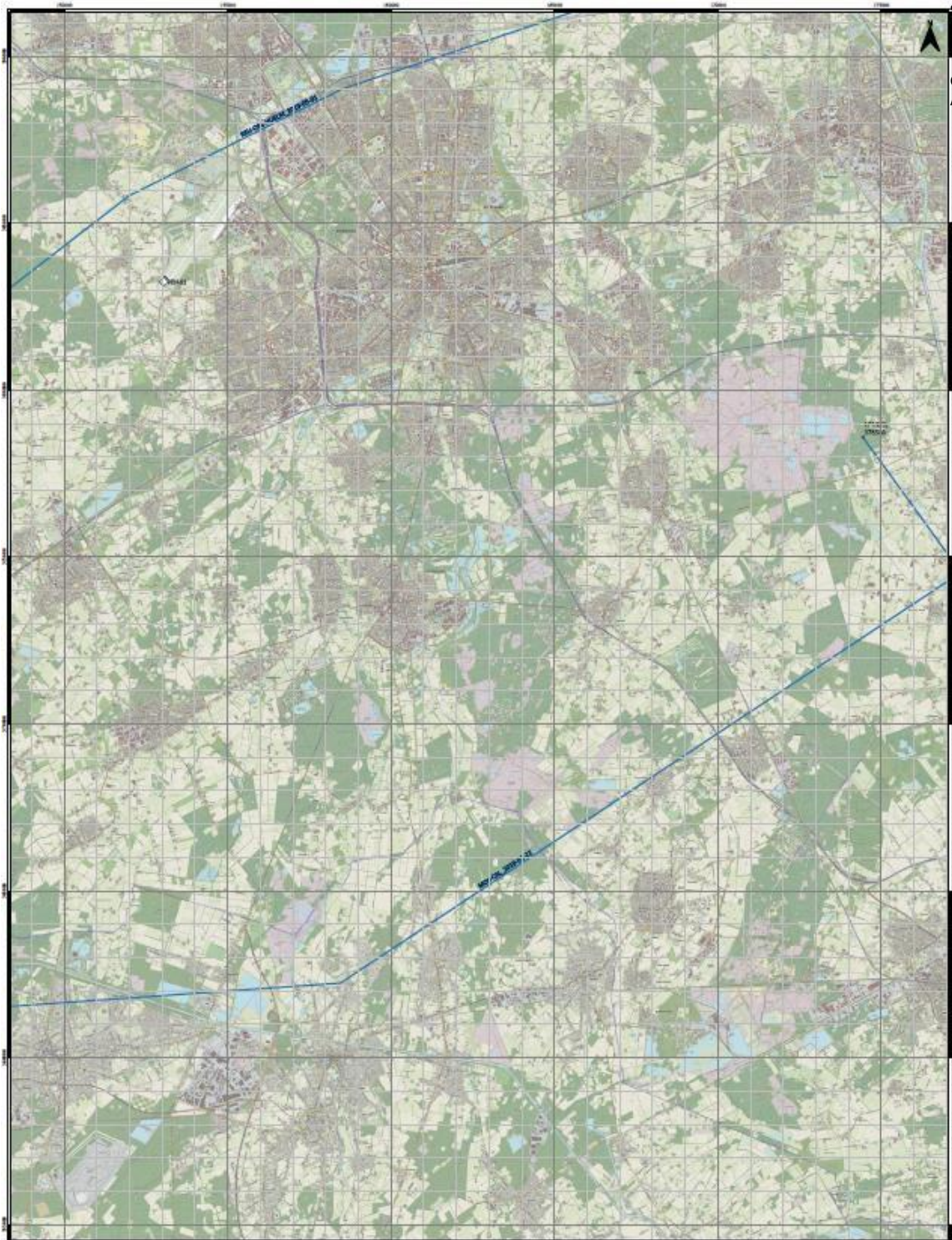


CSL: RD New (Amendort; 28902)

- Provinces
- Planned lines Cost-Braiant
- Planned lines SCAN
- Basis
- Optional
- \* End point coordinates (X,Y)
- Well - On
- ⊕ Well - TO







06-12-2019

Planned Seismic Lines Area F, G  
Part 5 of 9 - 1:50.000

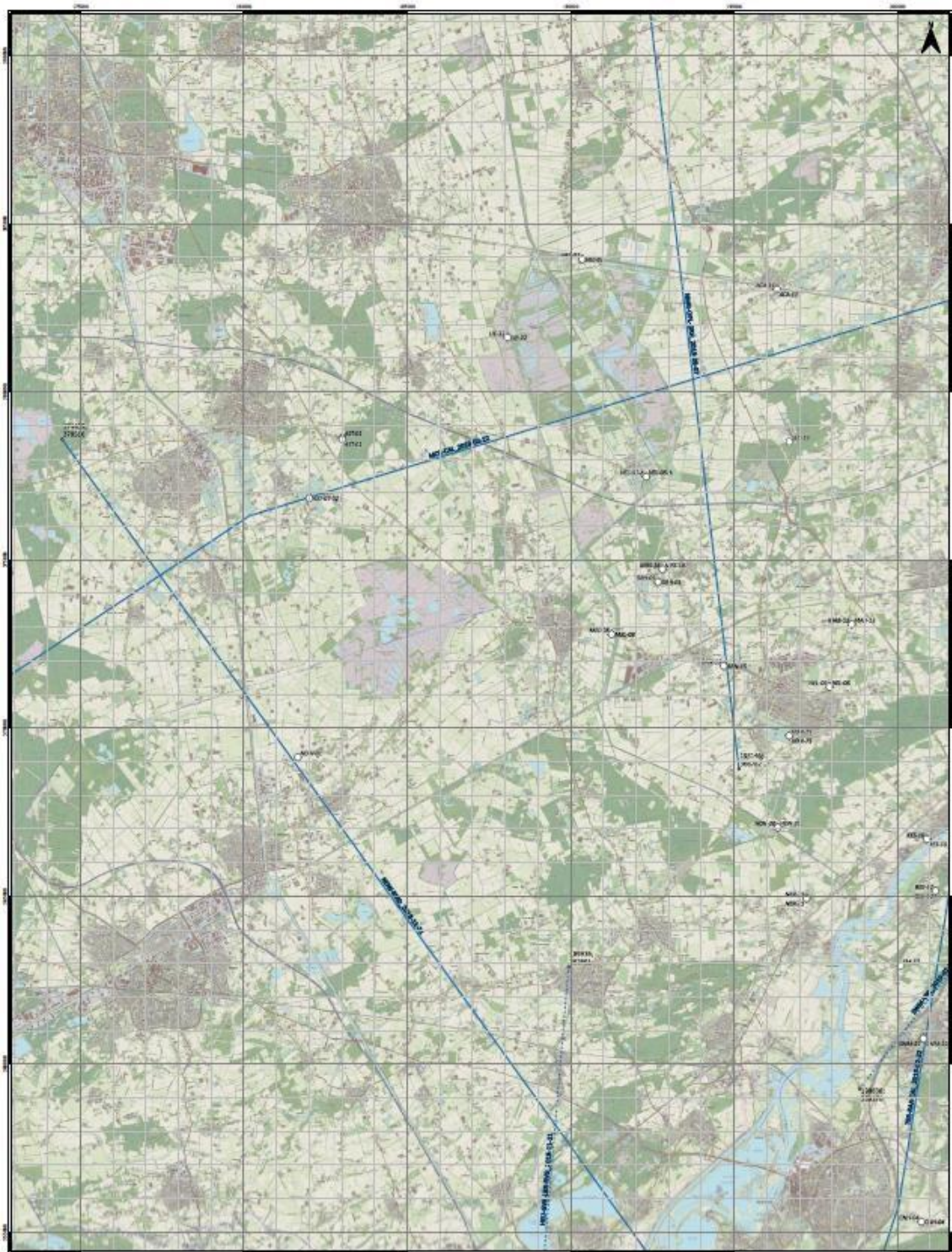


CRS: RD New (Amersfoort; 28992)

- Provinces
- Planned lines Dordrecht
- Planned lines SCAN
- Basis
- Optional
- End point coordinates (X,Y)
- Well - Om
- ◆ Well - TD







06-12-2019

Planned Seismic Lines Area F, G  
Part 6 of 9 - 1:50.000

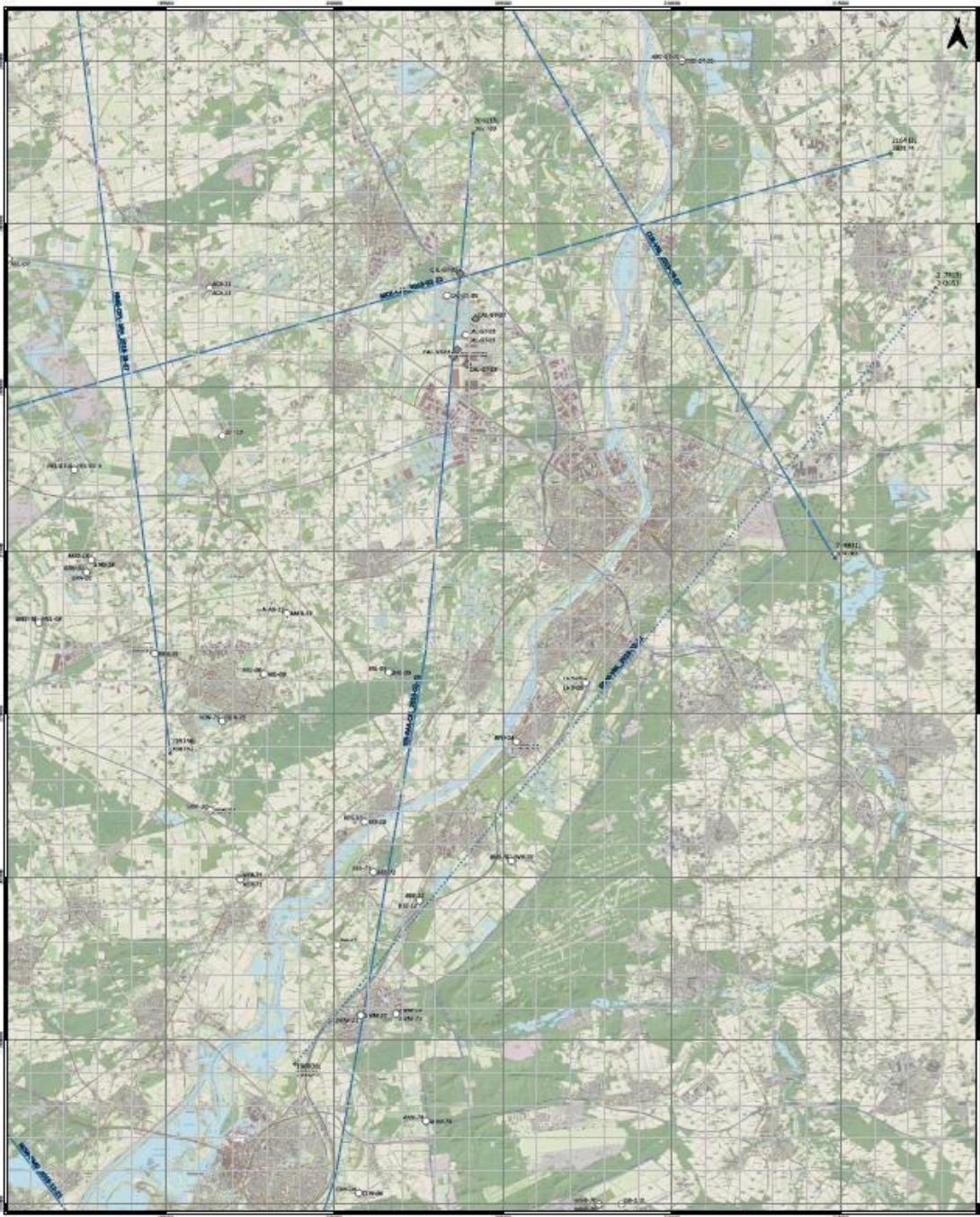


CRS: RD New (Amersfoort; 28902)

- Provinces
- ▭ Planned lines Dord-Grabant
- ▬ Planned lines SCAN
- Basic
- Optional
- ◆ End point coordinates (X,Y)
- Well - 5m
- Well - 10







06-12-2019

Planned Seismic Lines Area F, G  
Part 7 of 9 - 1:50.000

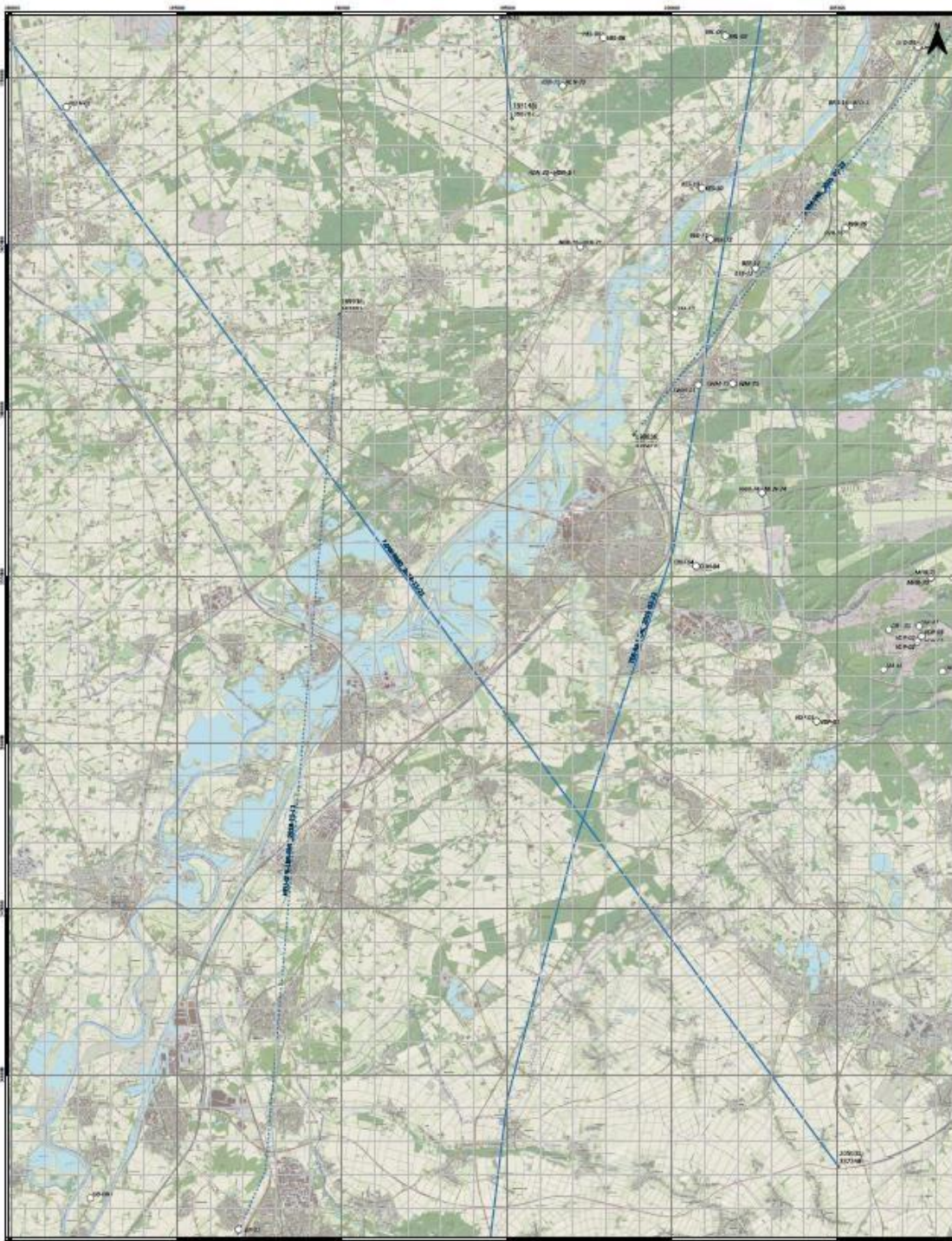


CRS: RD New (Amersfoort; 28992)

- Province
- Planned lines Dost-Grabant
- Planned lines SCAN
- Basin
- Optional
- End point coordinates (X,Y)
- WMI - 5m
- WMI - 10

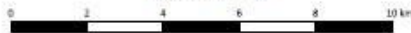






06-12-2019

Planned Seismic Lines Area F, G  
Part 8 of 9 - 1:50.000

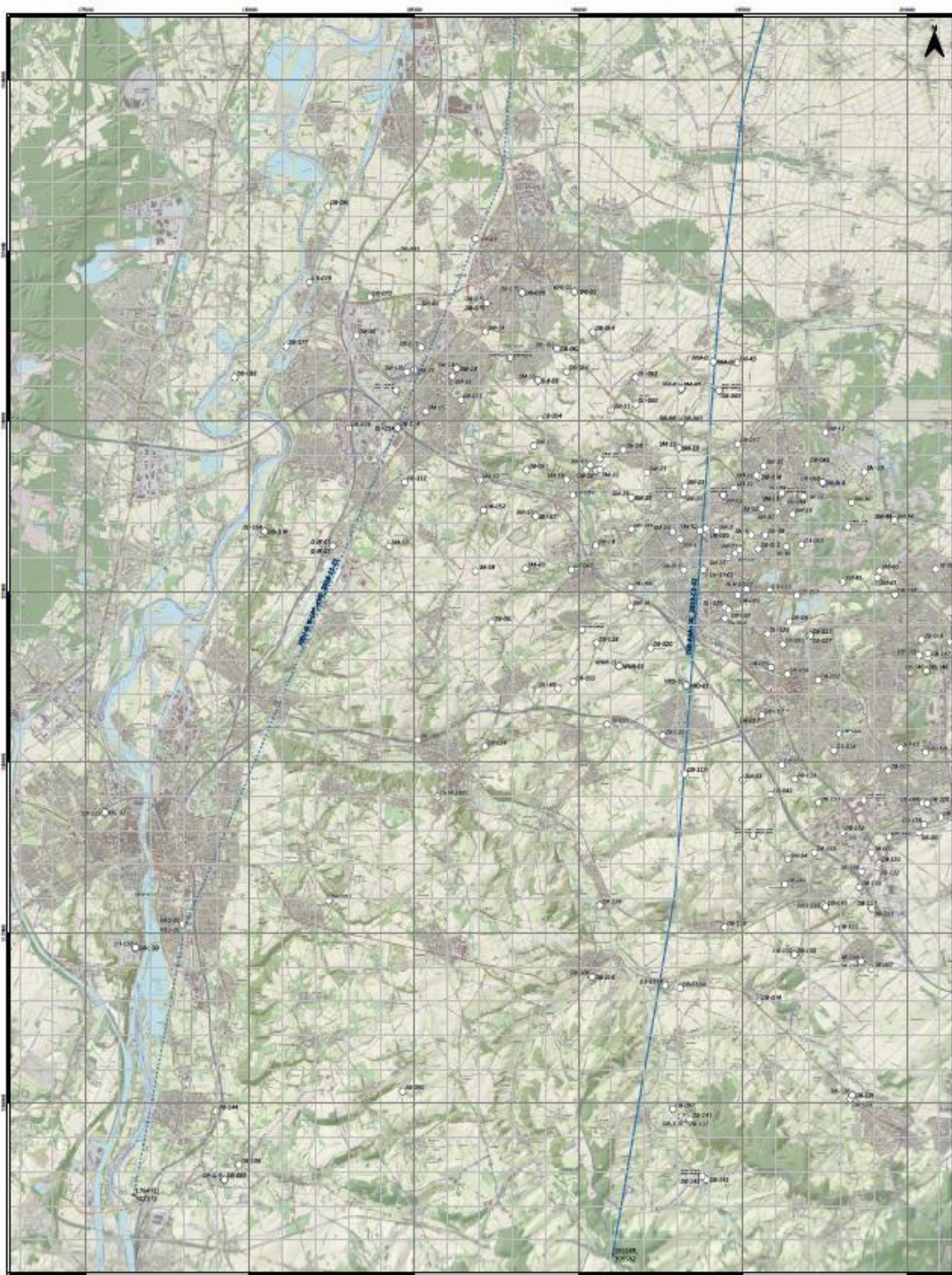


CBS: SD New (Amersfoort; 28992)

- Province
- Planned lines Oost-Brabant
- Planned lines SCAN
- Basis
- Optional
- End point coordinates (X,Y)
- Well - 0m
- ◆ Well - TD







06-12-2019

Planned Seismic Lines Area F, G  
Part 9 of 9 - 1:50.000



CES: RD New (Amersfoort; 20062)

- Provinces
- Planned lines Cloos-Grabant
- Planned lines SCAN
- Basis
- - - Optional
- End point coordinates (X,Y)
- Well - On
- ◆ Well - TD





