

TR-1

08-11-2017

All Depths MBCHH AH
Surface: +2 m NAP

mv

New X-mastree.5K./0812

Intermediate Spool

< 500 m TVD=AHD

>1000 m TVD = AHD- 62 m

DCB Spool / 3 1/2 en 4 1/2 split- hangers

shoe 24" casing 37 m

shoe 16" casing 383 m

3 1/2" Vam 10.2 ppf K-55

Hole in 4 1/2" tbg. at approx...1134 m / 0812

Hold up at 1453 m w/l
11-2004/4-2005

HUD 1463 m /1212

4 1/2" Vam 12.6 ppf K-55

Hole in 4 1/2" tbg. at approx...1515 m

HUD at 1543m w/l /1117

HUD at 1587 m w/l 1207/0408/1008/0709/0610/1210/1212/1216/0517
HUD at 1589 m w/l /0911/0712/0513/1113/0414/1014/0515/1115/0516/
HUD at 1591 m w/l...11:04/.5:05/11:05

HUD at 1603,5 m w/l - Ø 58 mm LIB - 1-89

1605 m 3 1/2" plugged , (fish)

1602 m 10 3/4" (55,5 ppf K55) Casing shoe

1603 m 3 1/2" injection shoe

Carnallite

1603

1639 m Prod. perfs

1638

Halite

1683

Bischofite

1723 m perf.

20 m cut-off tbg

1748

1756 m X-over 4 1/2"x 2 7/8"

1757 m 2.313" X-nipple

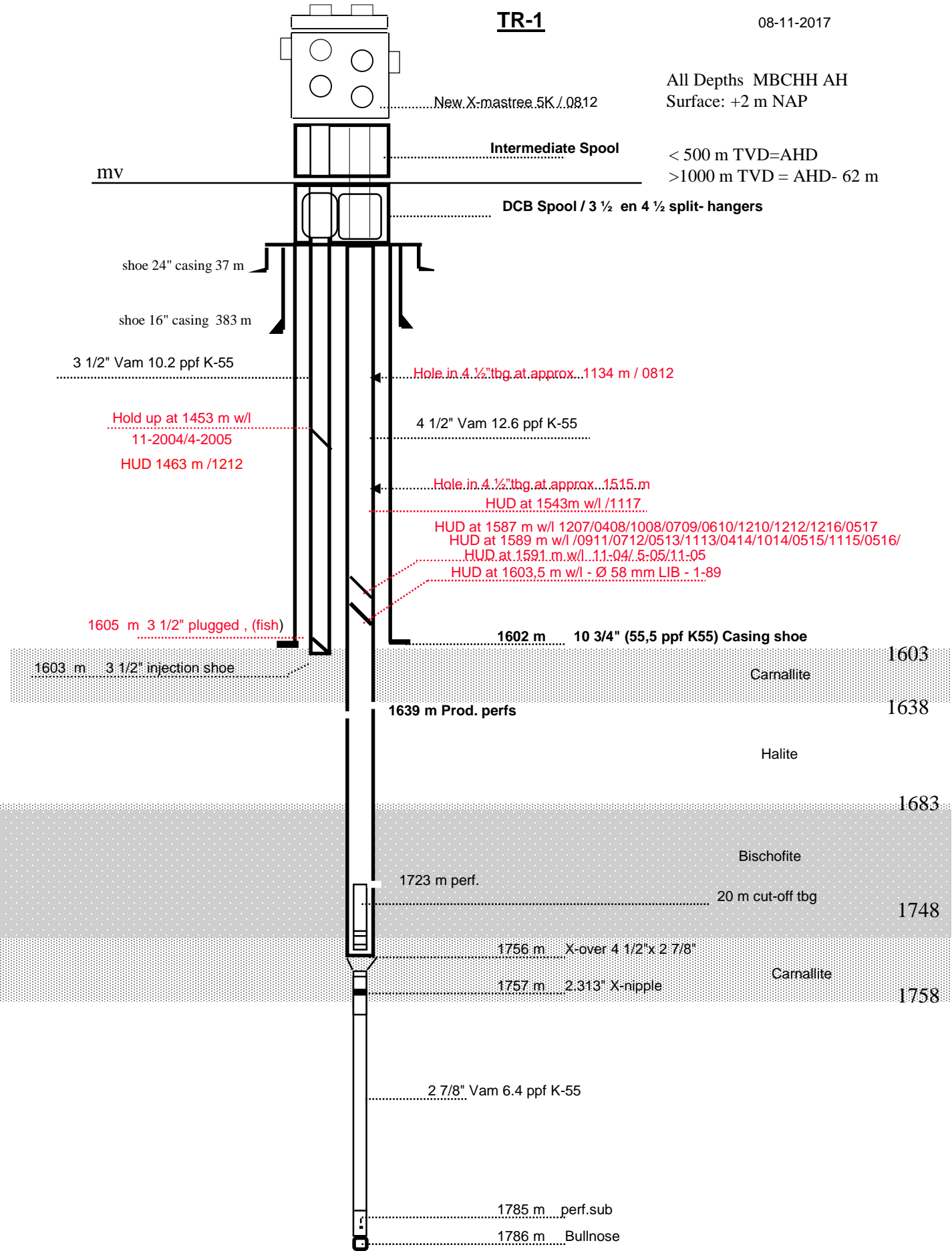
Carnallite

1758

2 7/8" Vam 6.4 ppf K-55

1785 m perf.sub

1786 m Bullnose

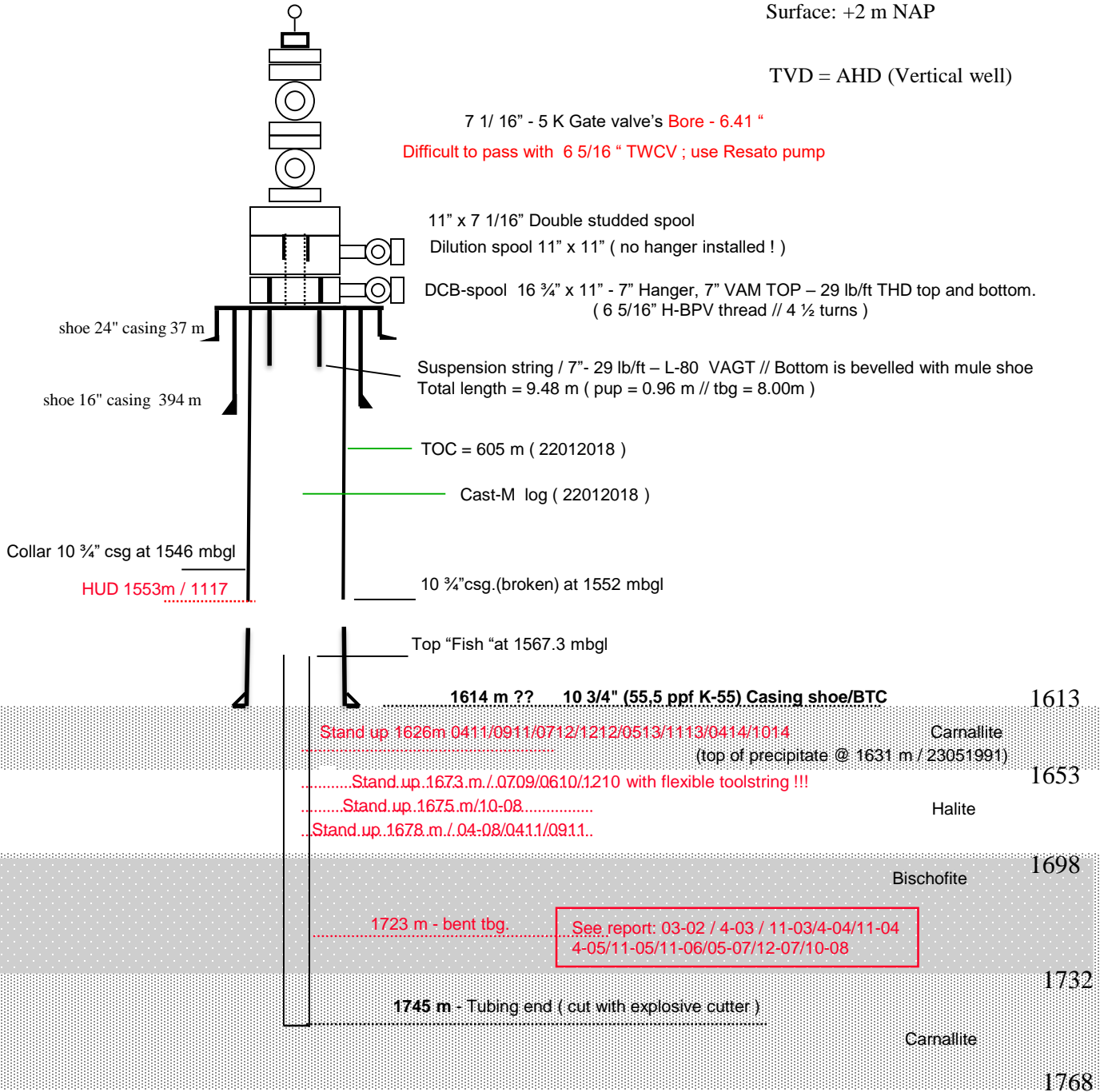


All Depths in MBCHH
Surface: +2 m NAP

TVD = AHD (Vertical well)

7 1/16" - 5 K Gate valve's Bore - 6.41 "

Difficult to pass with 6 5/16 " TWCV ; use Resato pump



TR-3

08-11-2017

All depths in MBCHH
 Surface : + 2 m NAP
 < 500 m. TVD = AH
 > 1000 m TVD = AH - 174 m

4 1/16" - 5 K Composite X-mas tree

Intermediate spool (2001)

DCB spool (1982)

shoe 24" casing 37 m

shoe 16" casing 395 m

11" x 4 1/2" Hanger, VAM TOP Connections .(4" H-BPV thread)

11" x 7" Hanger, VAM TOP Connections .(6-5/16 H-BPV thread)

7" 29ppf L80 VAM TOP (0m to 507m)

7" 29ppf L80 VAGT (507m to 1572m)

4 1/2" 12,6 ppf L80 VAGT

3.813" X-nipple @ 1514m

Wireline entry guide @ 1526m

10 3/4" casing 55,5ppf K55

X-over 7" VAGT x 5" Hunting SLF @ 1572m

3.813" X-nipple

5" 23,2ppf L80 Hunting SLF

start bend 10 3/4" casing @ 1719m

TOP ZEZ 1655

Top of window at 1725

10 3/4" casing is strongly bent

10 3/4" - 55,5 ppf - K 55 csg shoe @ 1737 m

1743

Camallite

1798

Halite

1842

Camallite

1863

Bischofite

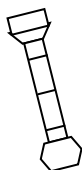
1893

1902m. no HUD / 1117

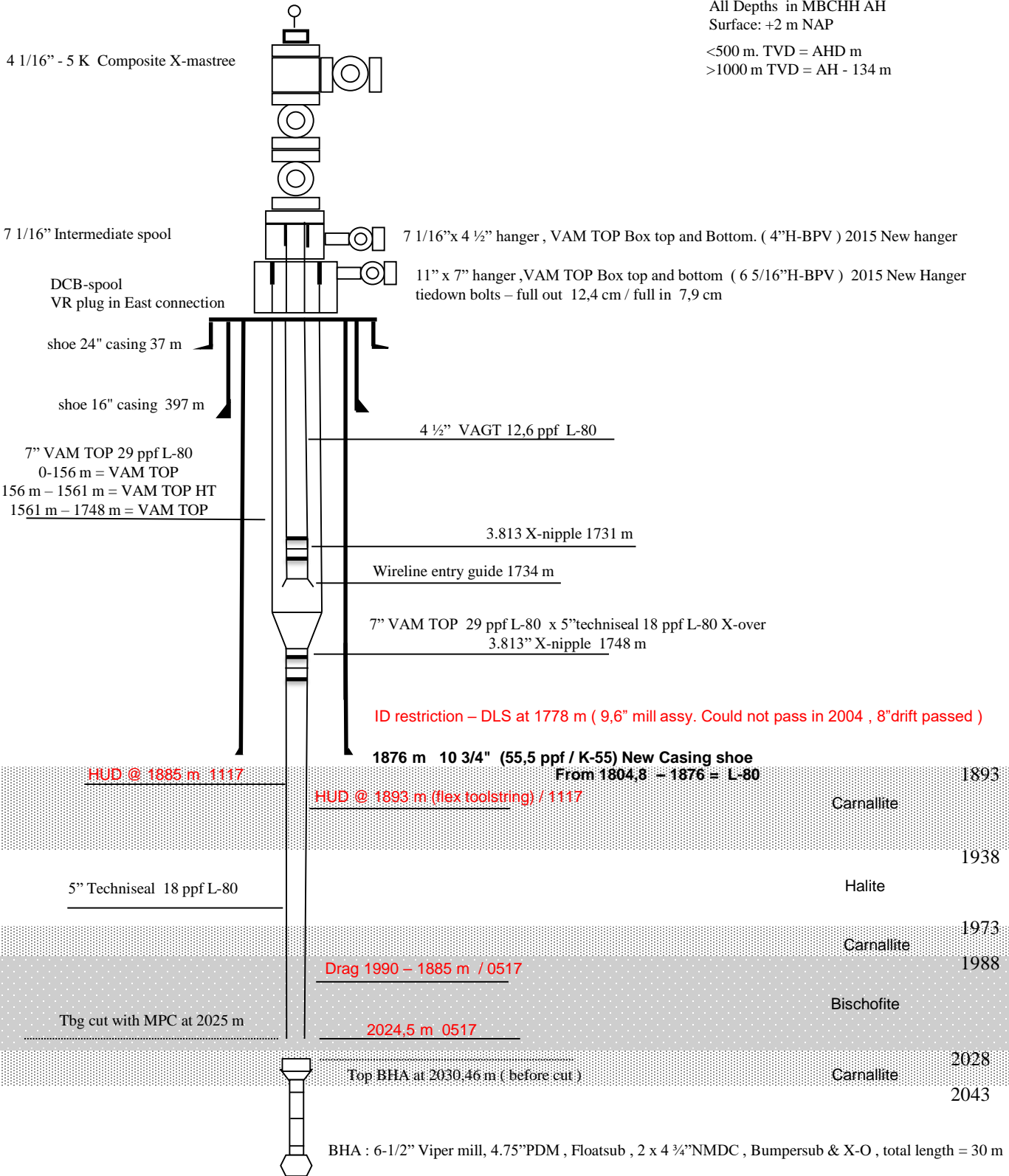
Cut production point @ 1904m
 (4 MPC attempts & 1x 2-3/8" Severing shot)

Camallite

1913



All Depths in MBCHH AH
 Surface: +2 m NAP
 <500 m. TVD = AHD m
 >1000 m TVD = AH - 134 m



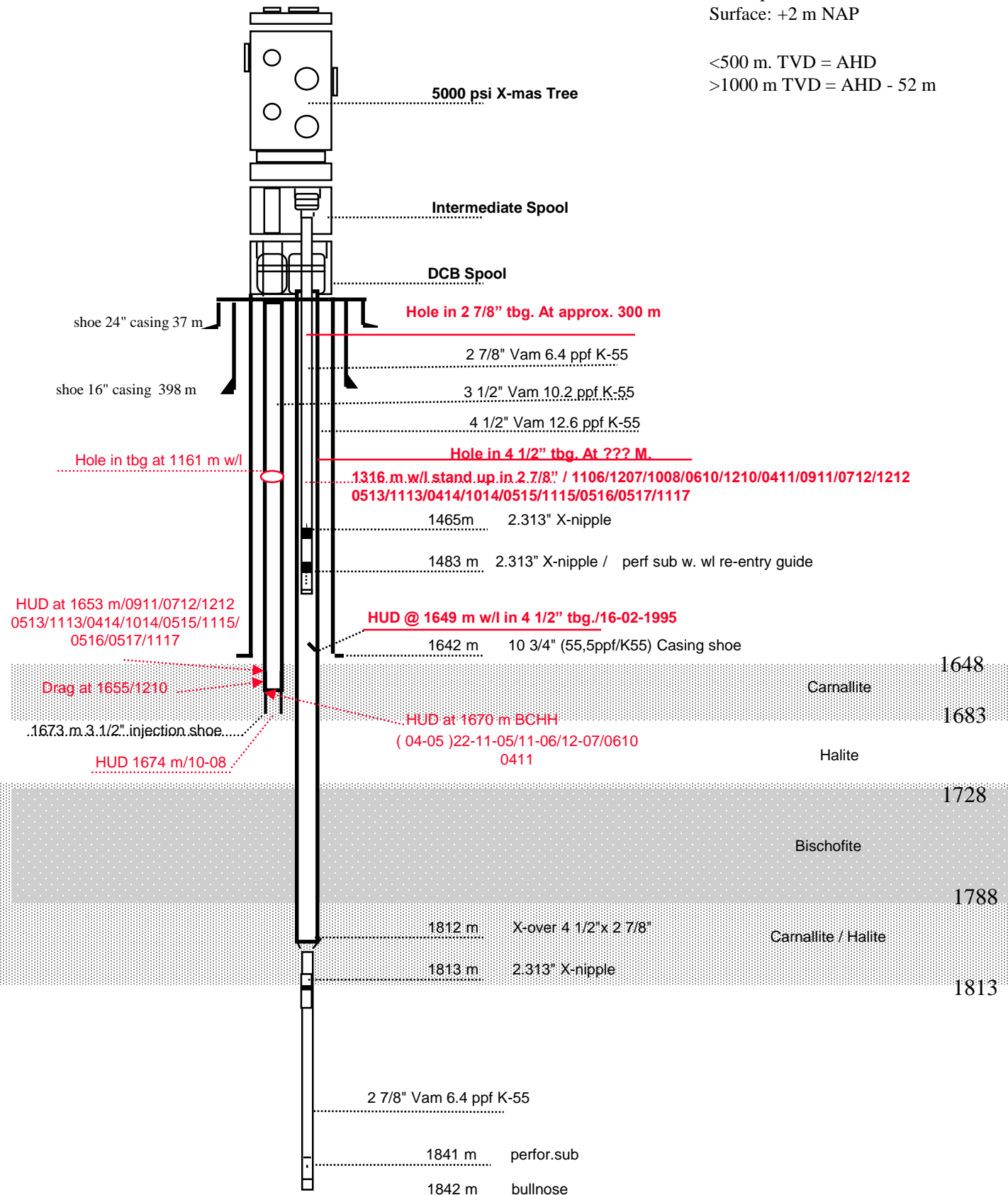
Rathole drilled to 2067 m

All Depths MBCHH AH

Surface: +2 m NAP

<500 m. TVD = AHD

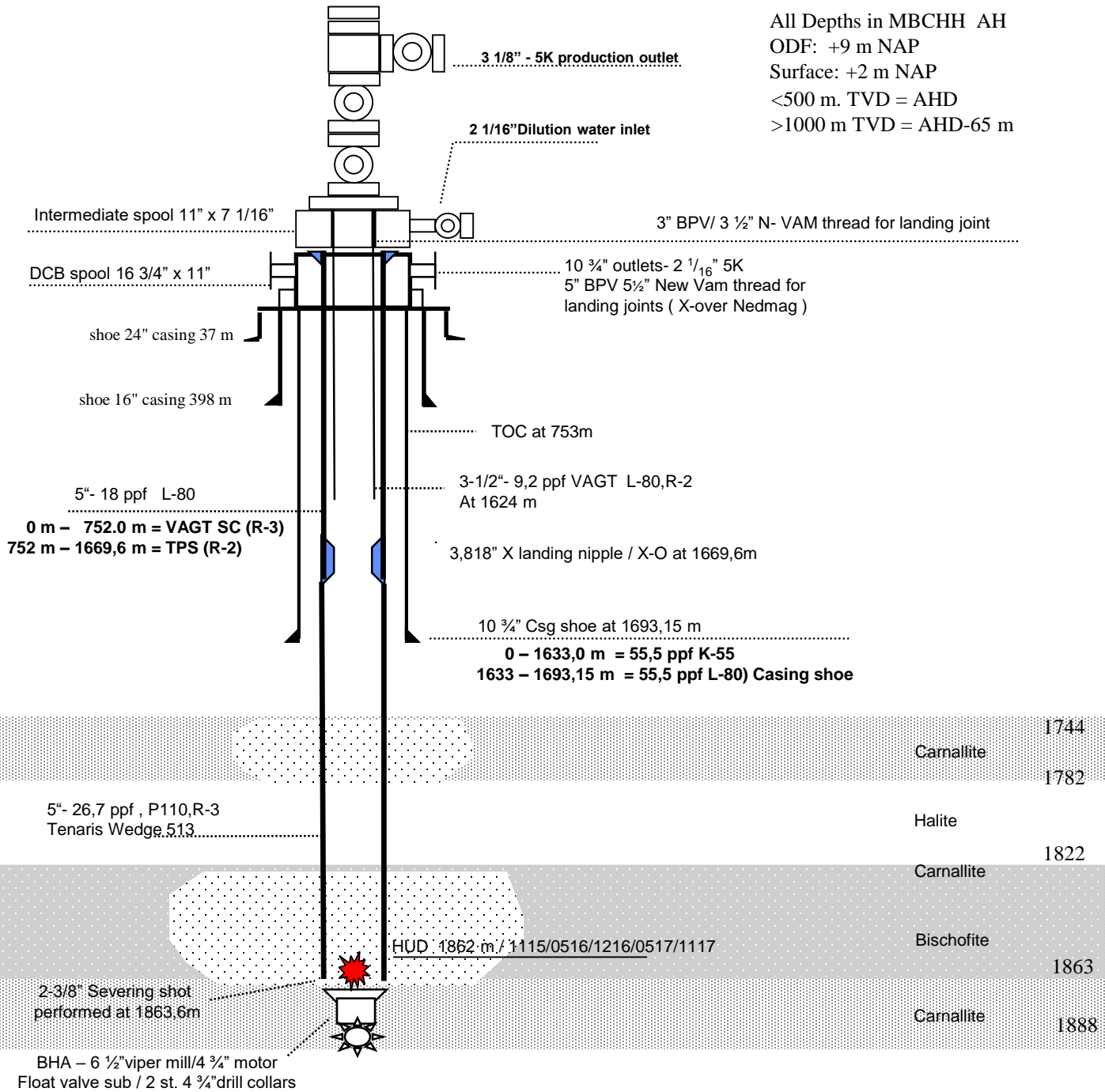
>1000 m TVD = AHD - 52 m



TR-6

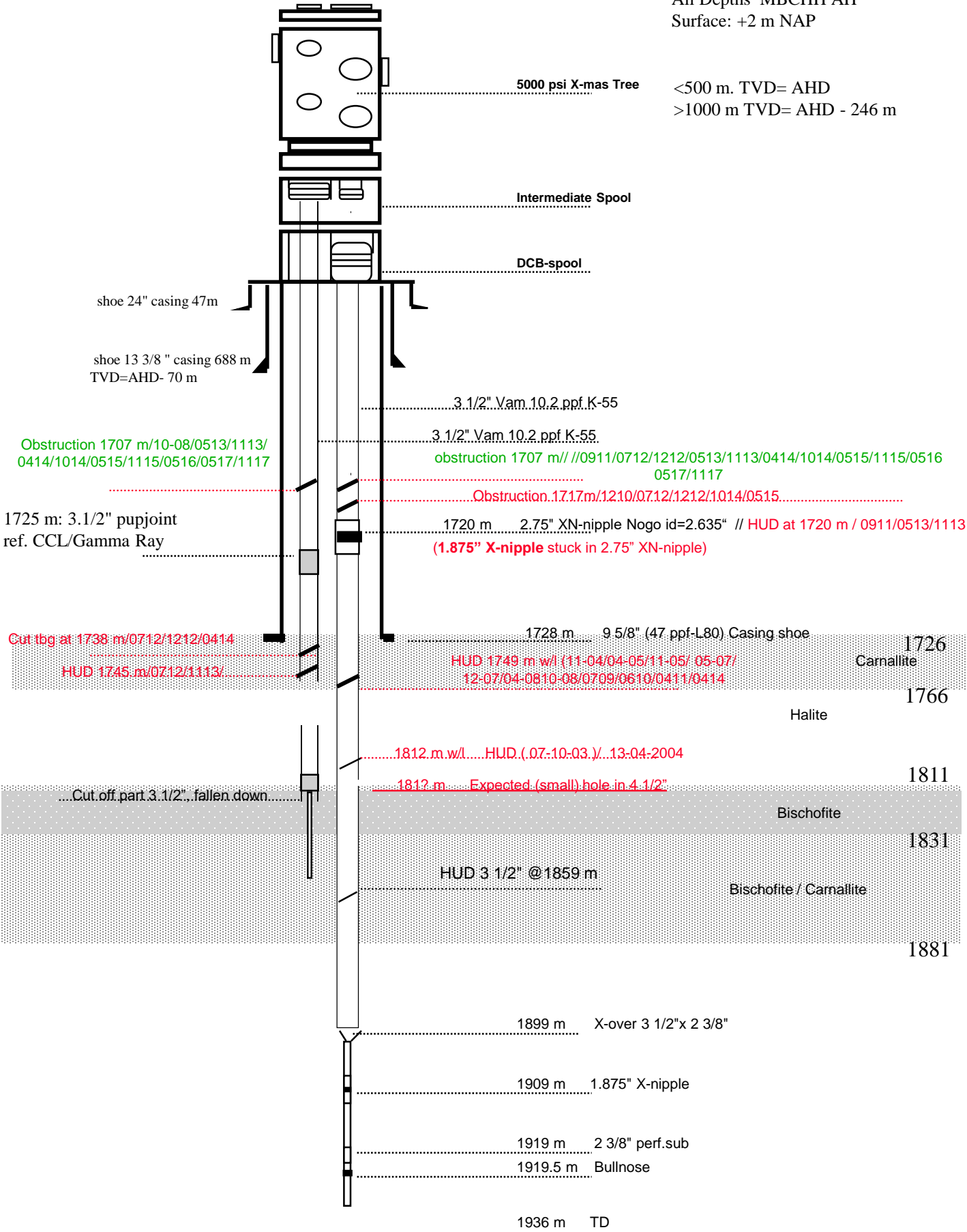
09-11-2017

All Depths in MBCHH AH
 ODF: +9 m NAP
 Surface: +2 m NAP
 <500 m. TVD = AHD
 >1000 m TVD = AHD-65 m



All Depths MBCHH AH

Surface: +2 m NAP



TR-8

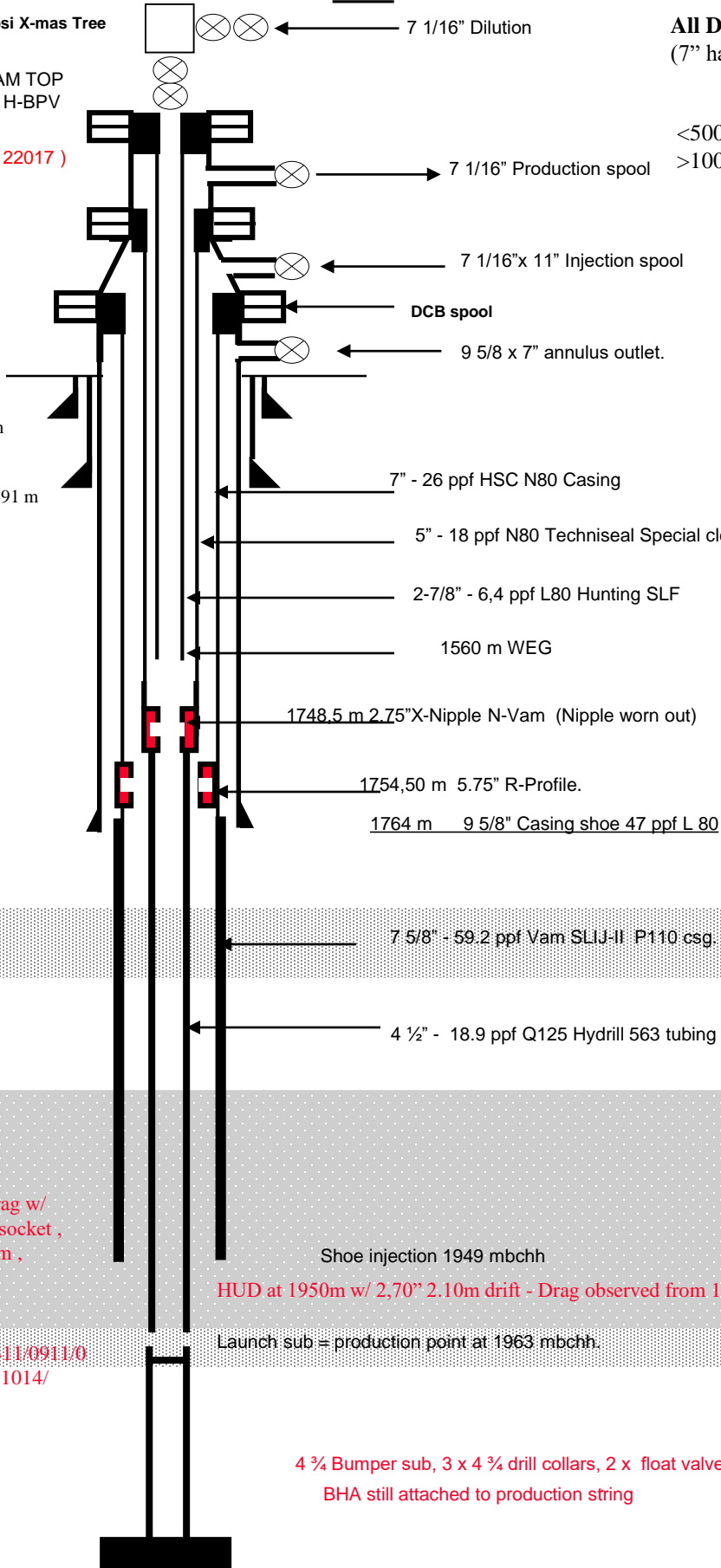
All Depths MBCHH
(7" hanger tie down bolts)

5000 psi X-mas Tree

Tbg hanger w/ 3-1/2" VAM TOP
box connections and 3" H-BPV
Thread

Hanger seal is leaking (122017)

<500 m. TVD= AHD
>1000 m TVD= AHD - 175 m



Carnallite 1816

1866

Halite 1916

Bischofite

Shoe injection 1949 mbchh

HUD at 1950m w/ 2,70" 2.10m drift - Drag observed from 1950 to 1920m

Launch sub = production point at 1963 mbchh.

Carnallite 1961

1981

4 1/4 Bumper sub, 3 x 4 1/4 drill collars, 2 x float valves 4 1/4 motor, 8 3/8" mill
BHA still attached to production string

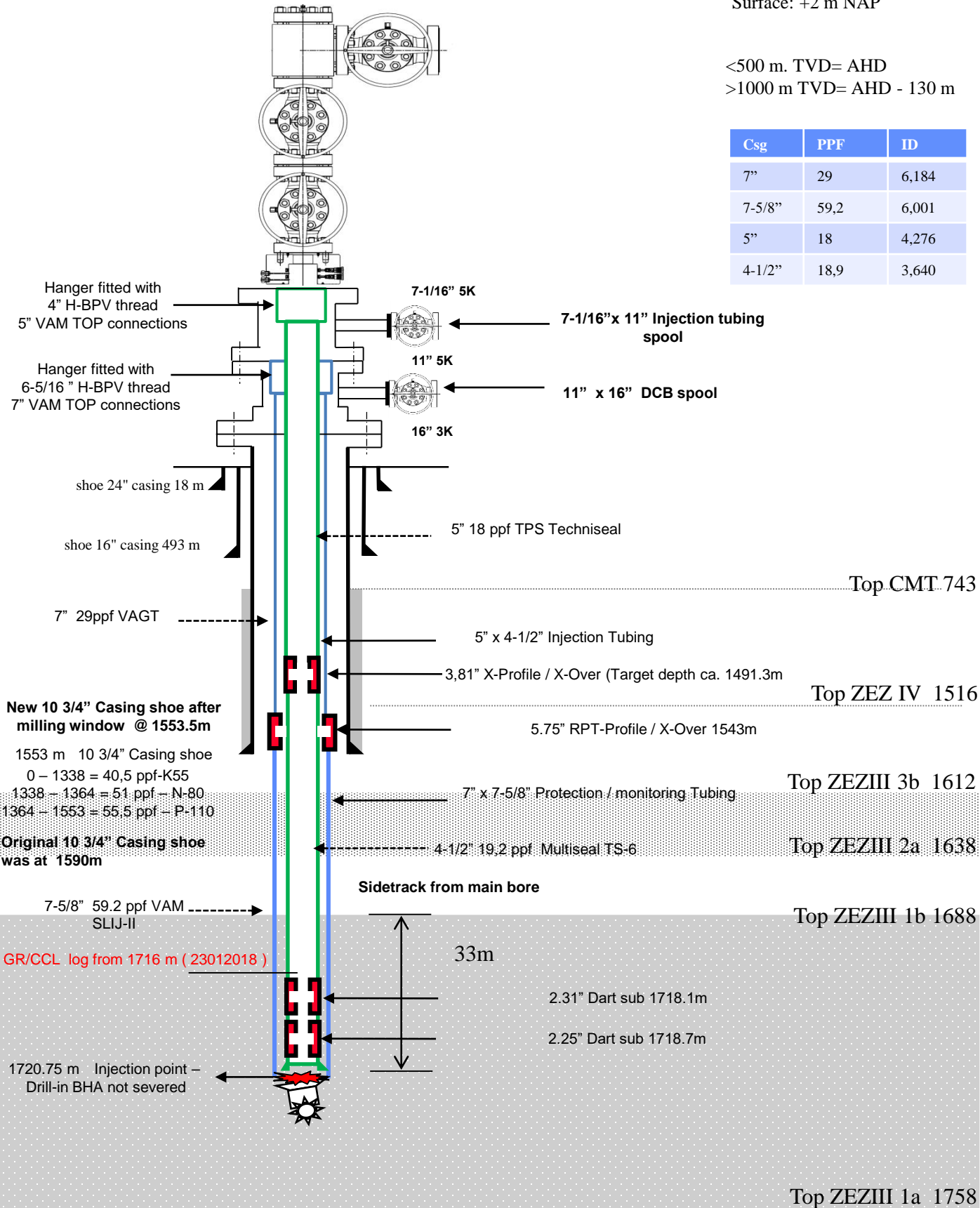
Between 1961 - 1950 m drag w/
1 7/8" toolstring, 1 1/4" rope socket,
10 ft stem, 8 ft jar, 3 ft stem,
Ø 69 mm GC.

HUD-1963
m/1008/0709/0610/1210/0411/0911/0
712/1212/0513/1113/0414/ 1014/
0515/1115/0516

All Depths BCHH AH
Surface: +2 m NAP

<500 m. TVD= AHD
>1000 m TVD= AHD - 130 m

Csg	PPF	ID
7"	29	6,184
7-5/8"	59,2	6,001
5"	18	4,276
4-1/2"	18,9	3,640



New 10 3/4" Casing shoe after milling window @ 1553.5m

1553 m 10 3/4" Casing shoe
0 – 1338 = 40,5 ppf-K55
1338 – 1364 = 51 ppf – N-80
1364 – 1553 = 55,5 ppf – P-110

Original 10 3/4" Casing shoe was at 1590m

7-5/8" 59.2 ppf VAM SLIJ-II

GR/CCL log from 1716 m (23012018)

1720.75 m Injection point – Drill-in BHA not severed

Sidetrack from main bore

33m

2.31" Dart sub 1718.1m

2.25" Dart sub 1718.7m

Top ZEZIII 1a 1758